

PR750H Pelletizer

USER MANUAL



Copyright © 2025 Cold Jet, DK

All rights reserved. Printed in the Denmark.

DUE TO CONTINUED PRODUCT DEVELOPMENT THIS INFORMATION MAY CHANGE WITHOUT NOTICE. THE INFORMATION AND INTELLECTUAL PROPERTY CONTAINED HEREIN IS CONFIDENTIAL BETWEEN COLD JET AND THE CLIENT AND REMAINS THE EXCLUSIVE PROPERTY OF COLD JET. IF YOU FIND ANY PROBLEMS IN THE DOCUMENTATION, PLEASE REPORT THEM TO US IN WRITING. COLD JET DOES NOT WARRANT THAT THIS DOCUMENT IS ERROR-FREE.

NO PART OF THIS PUBLICATION MAY BE REPRODUCED, STORED IN A RETRIEVAL SYSTEM, OR TRANSMITTED IN ANY FORM OR BY ANY MEANS, ELECTRONIC, MECHANICAL, PHOTOCOPYING, RECORDING OR OTHERWISE WITHOUT THE PRIOR WRITTEN PERMISSION OF COLD JET.

THIS MANUAL REFLECTS THE PRODUCT CONFIGURATION AS WAS CURRENT AT THE TIME OF ITS WRITING. AN ITEM'S DISPLAY IN THIS MANUAL DOES NOT GUARANTEE THE ITEM'S AVAILABILITY AT ANY TIME IN THE FUTURE. IMAGES SHOWN ARE FOR REPRESENTATION PURPOSES ONLY. PRODUCTS MAY VARY FROM THE IMAGES DISPLAYED. COLD JET IS NOT LIABLE FOR TYPOGRAPHICAL ERRORS OR CHANGES TO SPECIFICATIONS PRESENTED.

CONTENT

INTRODUCTION	4
• About the PR750H Pelletizer	4
SYSTEM DESCRIPTION	5
• Functional description	5
• System identification	6
• Supplier responsible for the equipment	6
TECHNICAL DATA	7
SAFETY REGULATIONS	8
• General Measures	8
• Personnel Qualifications	8
• Security and Risk	8
• Danger of Suffocation	9
• Static Electricity	9
• Danger of Congelation	10
• Pinch Point Hazard	10
• Wear Protective Gloves	10
SAFETY OPERATION	11
• Emergency stop	11
• Machine safety	11
• Liquid CO2 Leakage	11
• Stop Production	11
• Daily checkup before start-up	11
MACHINE STRUCTURE	12
MACHINE CONTROLS	13
• PR750H HMI Screen	13
• User Level HMI Screen.	17
REPAIR AND WARRANTY	19
• Repair	19
MAINTENANCE	19
• Degassing system:	19
• Hydraulic station:	19
• Safety device replacement intervals	19
• Terms of Warranty	20
• Cleaning the PR750H	20
INSTRUCTION – UNPACKING AND PREPARATIONS BEFORE INSTALLATION	22
• End of life for the PR750H	24



INTRODUCTION

This manual should be kept with the owner and be readily accessible for operation and maintenance. This manual contains information for the safety, operation, and maintenance.

The graphics used in this manual may show machine details that may be different than the actual machine. Components of the machine may have been removed for illustrative purposes or the continuing improvement of the machine's design may cause changes that are not included in this publication.

The owner of this machine is responsible for verifying the operator of this machine is properly trained and understands the contents of this manual

About the PR750H Pelletizer

The PR750H Pelletizer from Cold Jet presents a state-of-the-art dry ice Pelletizer with features for easy operation, swift production shifts, and high capacity performance.

The PR750H produces high-quality dry ice pellets. This is secured by the closed chamber technology which also ensures fast production shifts and an extremely short start-up time.

The automatic change of extruder plates eliminates downtime and reduces the loss of valuable CO₂. The pellet length and quality are optimized by the PR750 design, and it can produce two sizes of pellets without changing the extruder plates. The PR750H has many technical features compared to existing products on the market.

The hydraulic unit uses logic controlled high-performance components for optimal output.

The machine parts are protected by a moisture-free enclosure, which also reduces the noise level to a minimum (below 75 dB(a)). The PR750H provides a non-stop supply of high-density dry ice pellets. The source of raw material for the production of pellets is liquid carbon dioxide preserved at low temperatures in a storage tank.



The control system of the PR750H Pelletizer, based on Beckhoff Industrial PC and HMI system, offers maximum functionality and a user-friendly interface. By selecting the pellet size required, production is started by pressing one button. Just-In-Time production minimizes labor and waste during production.

SYSTEM DESCRIPTION

This operator manual covers the PR750H operating instructions. The main parts are described in the machine structure section. Operating/User instruction for add-ons can be found in other materials not included in this manual.

Functional description

The main function of the PR750H is to produce dry ice pellets from liquid carbon dioxide. This is performed by a sequence of operations executed by the Beckhoff IPC. The main steps during normal production are as follows and refer to PI diagram 2A0510 and 2A0511 for PR750H:

1. **Start-up**
2. **Production**
3. **Standby**
4. **Shut down**

At every start-up, the hydraulic cylinder =G01-G1-MO1 for the extruder piston is extracted to its maximum position to extrude the CO₂ snow in the chamber in case of an emergency stop or machine error.

Liquid CO₂ is fed from an external CO₂ tank (not part of this description – see supplier information) through an insulated pipe to the PR750H. It is recommended to use a gas separator to expel gaseous CO₂ from the liquid CO₂.

When the hydraulic cylinder =G01-G1-MO1 for extruder piston is retracted and hydraulic cylinder =G01-Q3-MO1 for extruder plate changer is in the middle position - CO₂ In valve =W01-Q1 and Injection valve =G01-Q1 will open and purge gaseous CO₂ through the chamber, degassing filters via degassing pipes to the CO₂ out. When temperature =W01-TT1 in the liquid CO₂ is -14°C injection will proceed until the timer is reached. The degassing valve =G01-Q5 on the extruder chamber will open to reduce chamber pressure before the hydraulic cylinder =G01-G1-MO1 so the extruder piston will extract until fast forward pressure set point is reached and the hydraulic cylinder will again retract. This will continue until the plug thickness set point is reached. When plug thickness is reached the hydraulic cylinder =G01-Q3-MO1 for the extruder plate changer will move to the selected extruder plate position and production will commence.

In production mode CO₂ In valve =W01-Q1 and the Injection valve =G01-Q1 will open until the timer is reached. The degassing valve =G01-Q5 on the extruder chamber will open to reduce chamber pressure before the hydraulic cylinder =G01-G1-MO1 for the extruder piston will extract until plug set point is reached and the hydraulic cylinder will again retract. This cycle will continue until a different step is selected. During production, it is possible to set the PR750H on standby. When the maximum standby time is reached, the PR750H will run a shutdown sequence.





The shutdown sequence ensures that PR750H is stopped in a proper position to empty the extruder chamber of dry ice snow and avoid moisture in the extruder chamber. The hydraulic cylinder =G01-Q3-MO1 for the extruder plate changer will move to the selected position and the hydraulic cylinder =G01-G1-MO1 for the extruder piston will extract to the maximum position and return to shut down setpoint position. The hydraulic cylinder =G01-Q3-MO1 for the extruder plate changer is in the middle position and all valves are closed.





Color detection of the lighthouse

Green:	Machine is ready and there are no alarms (error messages).
Yellow:	Machine has been paused.
Red:	Machine out of operation due to an alarm (error message).

System identification

System is marked with:

PR750H			 Cold Jet® <i>the force of nature</i>
Machine no.:			Weight:
2A0510			1700 KG / 3747 lb
Serial no.:	Year:		Power:
2020-12-09	2020		3 x 380-480V AC + PE, 50-60Hz I_{max} ,32A
P max. CO₂:	P max. Air:		 
22Bar/319PSI	10Bar / 145 PSI		
Industrivej 68 - DK-6740 Bramming - www.coldjet.com			

PR750H			 Cold Jet® <i>the force of nature</i>
Machine no.:			Weight:
2A0511			1700 KG / 3747 lb
Serial no.:	Year:		Power:
202x-xx-xx	202x		3 x 220V AC + PE, 50-60Hz I_{max} ,45A
P max. CO₂:	P max. Air:		 
22Bar/319PSI	10Bar / 145 PSI		
Industrivej 68 - DK-6740 Bramming - www.coldjet.com			

Supplier responsible for the equipment

Cold Jet ApS
Industrivej 68
DK-6740 Bramming
Denmark
Phone: +45 75 56 15 00
Fax: +45 75 56 15 09
Homepage: www.coldjet.com

TECHNICAL DATA

Rated Output:

kg/h: up to 750

lbs/h: up to 1653

lbs of high-quality dry ice pellets, depending on the extruder plate applied

Pellet Size:

Diameter:

mm: 1,7 – 3 – 6 – 10 – 16

inch: 0.07 – 0.12 – 0.24 – 0.39 – 0.62

Inlet Liquid CO₂ Pressure:

Liquid CO ₂ Supply System	PR750H
Supply Pressure (Min-Max)	13-18 bar (189-261 psi)
Supply Pressure Range	+/- 1.0 bar (14.5 psi)
Supply Pressure (Recommended PBU Setting)	15-16 bar (218-232 psi)

Liquid CO₂ Dryness Fraction:

The water content should not exceed 35 ppm and should not be less than 5 ppm – or equivalent to a dewpoint temperature of -66°C to -51°C (-86.8°F to -59.8°F).

NOTE:

The liquid CO₂ supply must be completely free of oil and must have a minimal purity of 99.9%.

Liquid CO₂ Supply Pipe:

Internal diameter 20 mm (0.8 inch), very well insulated with a minimum number of bends and fittings.

NOTE: If over 20 m (65.6 feet) in length, use an internal diameter of 25 mm (1 inch).

Power Supply:

Electrical Service & Supply	Standard	Including Warm Weather Kit	Including Cold Weather Kit	Including Warm and Cold Weather Kits
Voltage AC/ Frequency (EU 50Hz)	3 x 400 VAC/50Hz			
Voltage AC/ Frequency (US 60 Hz)	3 x 480 VAC/60Hz			
Avg. Power Consumption (EU 50Hz)	21,7 A	23,4 A	22,8 A	24,5 A
Avg. Power Consumption (US 60Hz)	19,0 A	20,7 A	20,3 A	22,0 A
Upstream Fuse/CB (max)	32 A			
Upstream Fuse/Class CC or J	30 A			
IEC Short Circuit Ratings	Ik min 0,5 kA, Ik max 10 kA			
UL SCCR	25kA symmetrical 480V max. When requirements for upstream fuses are observed			

Machine Dimensions:

Length: 1500 mm / 59 in

Width: 1500 mm / 59 in

Height: 1800 mm / 71 in

Height: 1845 mm / 73.6 in (incl. ext. legs)

Weight: 1700 kg / 3747 lbs

Noise level: below 75 dB(a)

SAFETY REGULATIONS

General Measures

The PR750H manual contains instructions for starting up, operating, and servicing the machine. The operator must follow all instructions in this manual. The owner must make sure that the operator understands the contents of this manual and follows its guidelines and safety regulations.

Personnel Qualifications

Employees, who are in charge of installation, operation, service, and maintenance must be adequately trained to install and operate this machinery.

If the employees do not possess sufficient knowledge, they must be instructed and trained properly. If necessary, this can be arranged in cooperation with the manufacturer of the machine.

The owner of the machine shall make sure that the operator, who is to work with the PR750H, fully understands the importance of studying the contents of this manual and comply with the SAFETY REGULATIONS described on the following pages as well as those placed on the machine.

Contraindications

Cold Jet Machines are designed to operate for long periods of time. The machine is designed with an HMI that enables the operator to act upon errors that might occur during operation. The machine should only be operated with the doors closed.

Entering the machine, for service purposes etc. should be done in a way that allows the Contained CO₂ to reach a safe level and the temperature to fall for certain areas.

Machines with moving parts inside can cause injury, therefore they are designed with door switches that disable the machines from running when opened/activated.

Security and Risk

The PR750H is designed to comply with the EC Declaration of Conformity for Machinery. Therefore, using the machine does not pose a risk to the operator when the instructions in this manual are followed.

It is important that the operator follows the safety signs posted on the machine and the safety regulations described in this manual and that the operator reads and understands the contents of this manual before starting up the machine. Installation must be carried out according to the instruction "Preinstallation PR120H-350H-750H".

The machine may only be installed by authorized personnel with knowledge of the Council Directives BT 2014/35/EU and EMC 2014/30/EU (or similar directives in other parts of the world).



Danger of Suffocation

Dry ice pellets are CO₂ in solid form. At ordinary atmospheric pressure, CO₂ can only exist in this solid form at temperatures of -79°C (-110°F) or lower. Therefore, during dry ice production, the CO₂ will immediately be heated and thus transform from solid form into gas form.

Please note:

Since the specific gravity of CO₂ is higher than that of ordinary atmospheric air, the air with its contents of oxygen will be replaced by CO₂ if the dry ice production is taking place in small or insufficiently ventilated rooms.



Therefore, please note the following:

1. Low CO₂ concentrations (3-5%) may cause headaches and rapid breathing.
2. CO₂ concentrations of (7-10%) may cause headaches and nausea and may result in unconsciousness.
3. Higher CO₂ concentrations will result in unconsciousness and suffocation.

High CO₂ concentrations may result in unconsciousness due to the displacement of oxygen. Therefore, always provide sufficient ventilation of the working area, and avoid producing dry ice in small rooms.



Static Electricity

Dry ice can cause electrostatic discharges. However, the equipment is bonded to the ground to minimize electrostatic discharge, and the warning sign is meant to instruct the operator to avoid placing the equipment in rooms containing explosive gasses.

It is recommended to use a plastic shovel in the dry ice container.



Danger of Congelation

CO₂ in solid form has a temperature of -79°C

/-110°F or lower at atmospheric pressure and can therefore cause serious congelation injuries.

IMPORTANT!

The dry ice is extremely cold, therefore, do not touch parts of the machine, which are in direct contact with the dry ice without wearing appropriate protective clothing and gloves.



Pinch Point Hazard

If the plexiglass covers in front of the extruder plates are removed, the operator will be exposed to pinch point hazards.



Wear Protective Gloves

While working with the conveyor system, the operator must wear protective gloves to avoid contact with the dry ice or with parts of the machine which are in direct contact with the dry ice.

SAFETY OPERATION

Emergency stop

All equipment is connected to the general emergency system for PR750H.

When an emergency-stop device is activated, all components located in the emergency zone will be disconnected from their power source.

Machine safety

There are machine safety measures in the following areas:

- Extruder unit
- Extruder plate changer

In these areas, protective covers are in place.

The covers are provided with locking screws to deter removal.

Required performance level PLr = c Implemented in category = Cat3.

There is a danger of congelation/frost bite by touching machine parts cooled down by dry ice.

To prevent congelation the entire machine enclosure is provided with locks that require special tools to open.

Liquid CO₂ Leakage

If liquid CO₂ is leaking from any point of the CO₂ pipe system, the CO₂ supply must be stopped immediately. Localize the leakage and repair.

Stop Production

1. The machine is stopped by pressing the "Start / Stop" button.

NOTE: This will activate the shutdown procedure.

2. The CO₂ valve on the machine inlet will automatically close. It is recommended to close the manual valve on the mounting kit before leaving the machine unused for a longer period of time.
3. Cut off the main electric supply.

NOTE:

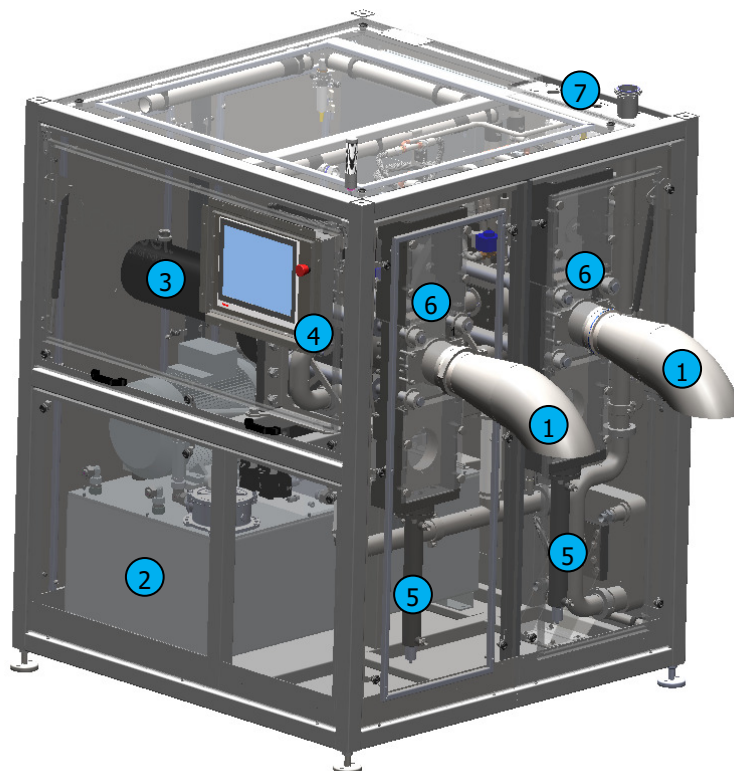
Do not shut off the main switch on the cabinet inside the machine before the inlet CO₂ pressure is ZERO. The CO₂ pressure can be checked on the "Process values" page.

Daily checkup before start-up

1. Check the oil level in the sight glass.
2. Check the pipe system for leaks.
3. Check the operation time since last service.
4. Open the drain and drain all water from the frame, then guide any remaining towards the open

MACHINE STRUCTURE

PR750H



- 1 Pellet outlet sprout
- 2 Hydraulic station
- 3 Main hydraulic cylinder
- 4 Touch panel
- 5 Extruder plate cylinder
- 6 Extruder plate changer
- 7 Connection to an external supply, CO² in and Out

MACHINE CONTROLS

The PR750H is controlled from an HMI screen. The next section will describe the function of the HMI.

PR750H HMI Screen



1. Homepage
2. Start, stop, and pause
3. Manuel/automatic
4. Process values
5. Alarm and history page
6. Login page
7. Operation time and service time
8. Nickname
9. Hardware status
10. Info page



1 Start-up page

This page can be activated from any page by pressing the "Home button" in the lower right-hand corner.

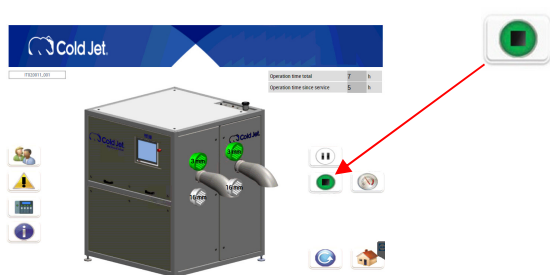
The main page shows if the extruder is selected by the color of the die plate above/under the outlet sprout is green. If the die plate is grey then it has not been selected. It also displays which extruder plate is selected, indicated on the die plate. It is possible to run with 1 or 2 sides.



2 Start, stop, and pause

The main functions can be activated by pressing one of the three buttons on the main screen.

By activating the "Start / Stop" button the machine starts or stops when in operation mode. When activating the PR750H, the standby buttons will be visible. Activating standby mode the PR750H will go into a pause mode.



When the PR750H is in a standby mode, the HMI screen changes the start buttons color to yellow. If the pause time exceeds the set pre-entered set point, the machine will automatically run a stop cycle and re-enter operation mode after the cycle is done.



3 Manual/Automatic

By activating the "mode select" button, it is possible to choose between automatic mode and manual mode.

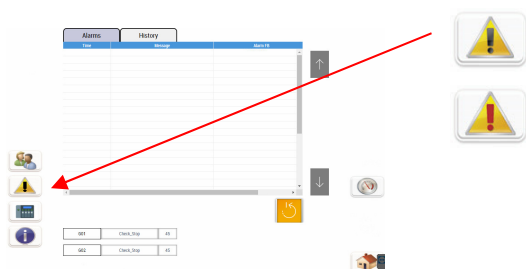
The default selection is automatic mode, which must be selected for production. In manual mode, the PR750H can be turned off.



4 Process values

By pressing the "gauge" button the "process values" page is activated. The page contains a 2-column display of real-time process values (PV). The corresponding "Set Values" (SV) are displayed next to the PV for comparison. During production, the PV will vary inside the given SV window.

The operating hours, time to service, and the cumulated strokes for the extruder are also displayed on this page.



5 Alarm

The Alarm page displays alarms for both Pelletizer and Dosing Unit. By pushing the "Alarm" button the active alarms are shown on the screen. When an alarm occurs the alarm buttons exclamation mark will change from black to red. To reset the alarms press the reset button.

Alarms must be reset before production can continue. When an alarm is reset the text will Disappear. If the text does not Disappear by pushing the reset button this means that the error has not been corrected. For more information please see the appendix Alarm list

The History page shows the last 1000 alarms of the PR750H.



6 Password protection

Some functions are password protected. To change these values the User must log in.

By activating the "User" button a login window and a keyboard appears on the screen.

Select the user level and enter the corresponding password.

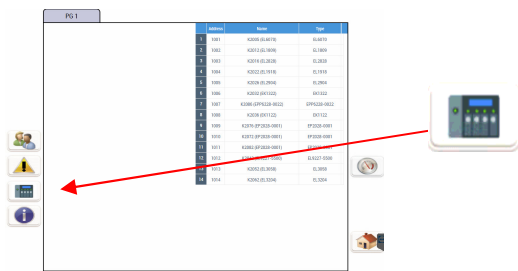
Press OK to proceed and cancel to exit.

To remove the keyboard, press X in the upper right corner.

The code for User-level is:

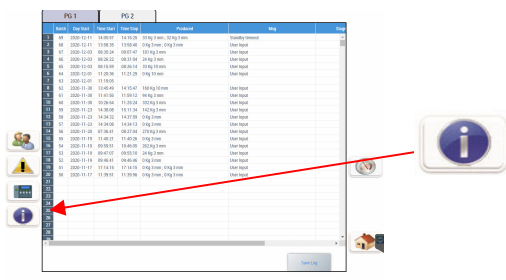
User name	Password
User	ColdjetPR2020

This sector can also be used to change the language.



9 Hardware status

These pages give information about the Hardware status for some of the electrical components. If there are no faults in the system, all the Address lines will be white. If there is a fault in a component, its address line will become red.



10 Info page

Info page divided into 2 pages, PG1 and PG2.

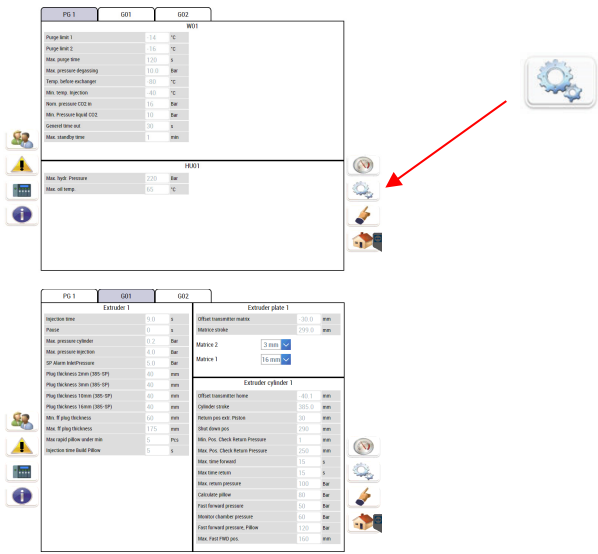
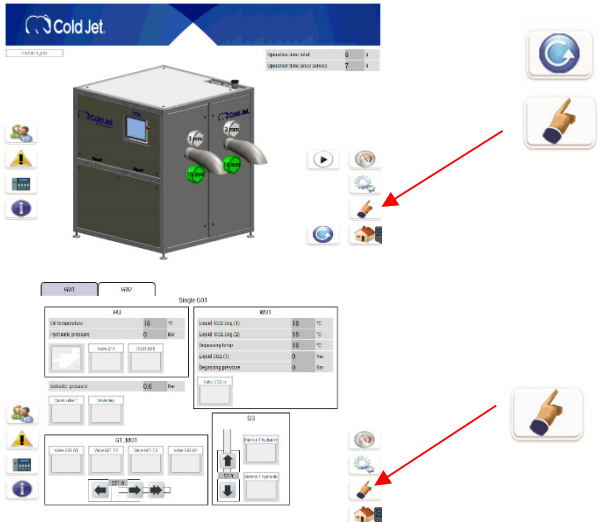
PG1 is the Production log, and it has the last 1000 productions.

PG 2 shows information such as Device, PLC, Software, and TeamViewer ID.

User Level HMI Screen.

This section will describe the extra options when the machine is logged in on User Level.



	<h3>11. Set Point Values</h3> <p>By pressing the “toothed wheel” button the “Setpoint” (SV) page is activated.</p> <p>The “set point” page contains 3 pages, PG 1, G01, and G02. These pages display set values for the current Dry Ice production. Fixed setpoints are password protected and have hardcoded limits to avoid unsafe production.</p> <p>A special feature is the option to select an individual pillow size for 3, 10, and 16mm extruder plates. For example, when changing the 3 mm extruder plate to a 16mm extruder plate, the program automatically uses the new setpoint for the pillow size.</p>
	<h3>12 Manual mode</h3> <p>By activating the “mode select” button, it is possible to choose between automatic mode and single mode. The default selection is automatic mode, which must be selected for production. In single mode the components can be operated individually.</p> <h4>Manual mode controls</h4> <p>By activating the “Manual mode” button, the manual operation page will appear. On this page, it is possible to access the function in single mode, i.e. operating the components one by one.</p> <p>This page should only be operated by well-trained staff and with reference to P&I diagram.</p> <p>The components will be activated by pressing the buttons. When the component is activated and working properly, the button will turn green showing “Component OK”.</p> <p>Most components have names like “purge valve” and moving the hydraulic cylinders can be done by starting the hydraulic motor and pressing the arrow buttons. The hydraulic valves have numbers corresponding to the P&I diagram.</p>

REPAIR AND WARRANTY

Repair

The repair/replacement of the following parts must be made by qualified personnel:

- Oil, filter on the hydraulic system.
- Filter for the liquid CO₂.
- Degassing filter on the extruder.
- Piston ring on the extruder.

When making repairs/replacements, use only original Cold Jet spare parts.

MAINTENANCE

Inspections to be carried out every week: Hydraulic station:

Inspect for oil leakages, Check hoses, fittings, valves, and connections for leakages. Reseal if necessary. Check the oil level, in the sight glass on the hydraulic tank side. Refill if necessary.

Degassing system:

Check the degassing system. Check the degassing for snow particles at the CO₂ outlet (can only be done when dry ice is being produced)

Snow particles at the CO₂ outlet indicate that the degassing filter is damaged. Replace the filter and gasket as described under in this manual.

Inspections to be carried out every 400 hours / 3 months: Liquid CO₂ filter:

Hydraulic station:

Check the oil. Drain a small quantity of oil – 1 dl – from the hydraulic tank. Inspect the oil visually. If the oil is not clear, bright, and light yellow it must be changed. Get a particle analysis of the oil if in doubt about the contamination degree.

Cold Jet recommends that the owner has a spare parts package in stock, so repairs can be made quickly and with little loss of production time.

For each service interval there is a list of necessary procedures and the Cold Jet article no. for spare parts package. For more information about the procedures and maintenance look at I appendix: Mechanical maintenance PR750H.

Safety device replacement intervals

The expected lifetime is 20 years or 100,000 couplings on electromechanical components (contactors and relays) whichever is the grater.

Terms of Warranty

In order to comply with the terms of the warranty, and for safety reasons, repairs other than those stated above require relevant tools and equipment and therefore must always be made either by a Cold Jet technician or by the owner's qualified personnel who has been trained by Cold Jet in the repair and maintenance of Cold Jet dry ice blasting and dry ice production machines and accessories. Beyond the necessary knowledge, the person concerned must have appropriate tools and equipment, as well as the auxiliary materials required, at their disposal.

The liability of the manufacturer under the terms of the CE endorsement as regards to safety may become **invalid**:

- If repairs are made using non- Cold Jet spare parts.
- If repairs are made by unqualified personnel.
- If repairs are unsatisfactory due to lack of relevant tools and equipment.

In such cases, the liability of the manufacturer will be solely confined to any manufacturing faults/errors made prior to the machine being delivered and before repairs/replacements have been made.

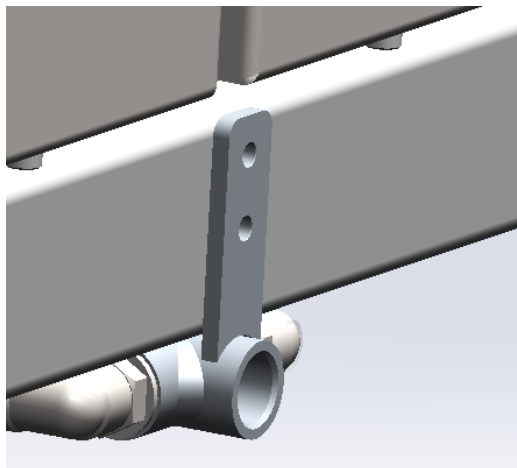
Cleaning the PR750H

The following steps are necessary when the PR750H needs to be cleaned.

- Disconnect the power.
- Protect all electronic equipment.

All surfaces can be cleaned with a degreaser and acid-free oil. If the bottom of the PR750H is full of water/oil then there is a drain plug that can be found on the backside of the PR750H.

Always close the drain after use.





INSTRUCTION – UNPACKING AND PREPARATIONS BEFORE INSTALLATION

Your new PR750H has been assembled as one unit. In order to avoid damages during transport, the PR750H has been bolted onto the transport pallet.

Unpacking and Examination for Transport Damages

1. Examine the transport box for any damages that may have occurred during transportation.
2. Remove the straps that secure the transport box to the pallet.
3. Remove the top and side plates from the transport box.
4. Remove the straps that secure the PR750H to the pallet.
5. Unbolt the 4 bolts that secure the PR750H to the pallet.
6. Examine the PR750H for external transport damages.
7. Open the cabinet door at the control panel and examine the PR750H for internal transport damages.

Requirements on the Environment Surrounding the PR750H

- The PR750H must be sheltered from wind and weather.
- The ambient temperature must be min. +10°C (+50°F).

How to Lift/Transport the PR750H

PR750H: Drawing no. A1

- The PR750H is supplied with threaded holes for lifting eyes. Always use lifting eyes to lift the PR750H.
- Always lift the PR750H according to the lifting Instructions in this manual.
- Lifting over people and animals is prohibited.
- Always use a forklift truck to transport the PR750H.
- Pick up the PR750H from the side as shown in the drawings.
- Transport the PR750H upright.
- Make sure that the forks are long enough to fully engage the PR750H.
- Always check that the forks are adjusted to proper width.

PR750H:

Min. load capacity of forklift truck: 2000 kg / 4409 lbs.

Min. fork length: 1.5 m

Floor Characteristics and Minimum Clear Distances

PR750H: Drawing no. A2

- The PR750H must be placed on a horizontal concrete floor with an adequate load-carrying capacity, free from crack formation and suitable for bolting the PR750H to it.
- The minimum clear distances must be observed to provide sufficient space for opening the cabinet doors and servicing.

Preinstallation.

Before the pelletizer can be installed, the owner/operator must prepare the site for installation and operation. It is the owner's responsibility to verify that all the necessary preparations have been made for the installation site and meet the specifications and guidelines detailed in the appendix: Pre-Installation Guidelines & Checklist. This may include but is not limited to:

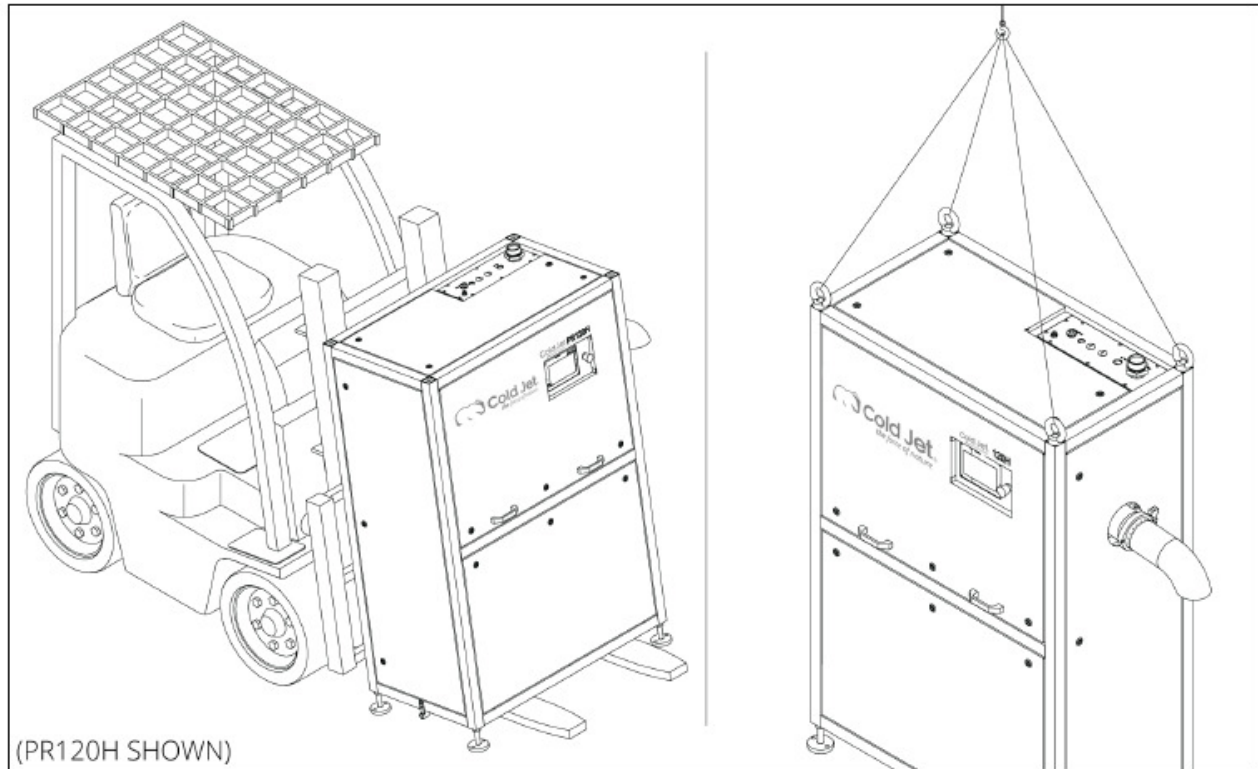
- Providing an indoor space with standard industrial flooring.
- Installing a liquid CO₂ tank and supply pipeline system up to the connection point at the pelletizer.
- Installing a gaseous CO₂ exhaust pipeline from the pelletizer to vent at a safe position.
- Installing a power supply that is sufficient and up to code.
- Providing proper room ventilation and other CO₂ safety measures.
- Determine which options and other manufacturing accessories to add/prepare for maximizing production performance and capabilities.

The owner is responsible for transmitting the specifications in this publication to other third-party contractors involved in pre-installation preparations of the site. Failure to properly prepare the site may delay the installation and/or optimal performance of the pelletizer. The graphics used in this manual may show pelletizer details and installation components that may be different than what is actually used. Components may have been removed for illustrative purposes or the continuing improvement of the pelletizer's design may cause changes that are not included in this publication.

Installation of the PR750H

The installation of the PR750H must be carried out by a Cold Jet service technician, or by a technician approved by Cold Jet.

DRAWING No. A1



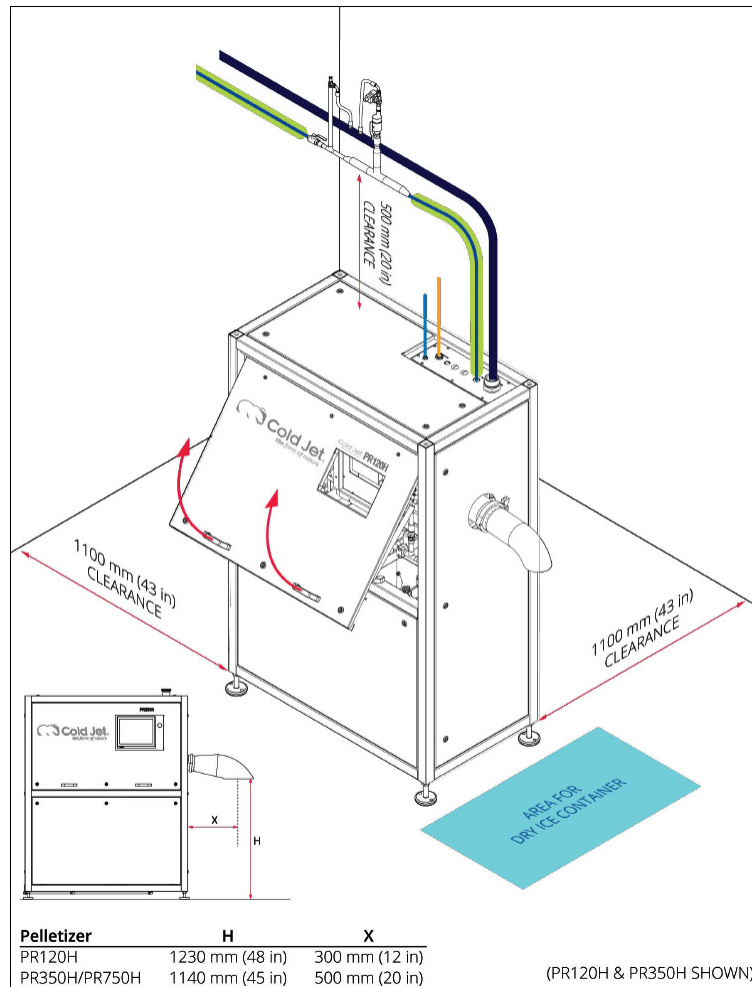
Correct Handling of the PR750H

Min. load capacity of forklift truck: 2000 kg / 4409 lbs.

Min. fork length: 1.5 m

The PR750H is supplied with threaded holes for lifting eyes. Always use the lifting eyes to lift the machine.

DRAWING No. A2



See the appendix for more technical descriptions.

End of life for the PR750H

When the PR750 is at the end of its life, the following steps are required.

- Disconnect the power
- Disconnect the CO² IN
- Drain the PR750 oil

For handling of the PR750H read section INSTRUCTION – UNPACKING AND PREPARATIONS BEFORE INSTALLATION. The materials and oil must be disposed of according to the jurisdictional rules and regulations for proper disposal.